

# Land Grant University To You (*LGU2U*)

## Funding Connections and Programming Session 2

*LGU2U - January 11, 2023*

# Land Grant University To You (*LGU2U*)

## Funding Connections and Programming Session 2

*LGU2U - January 11, 2023*

# **LGU2U - Session 2**

## **Funding Connections and Programming**

### **Today's Topics**

**How competitive and capacity funds are used and managed.**

**Insights from NIFA staff about fund management and accountability.**

**How impact reports are used by NIFA.**

**The data used to describe LGU capacity.**

# **LGU2U - Session 2**

## **Funding Connections and Programming**

### **Panel Discussion**

**Dr. Beverly Durgan – University of Minnesota**

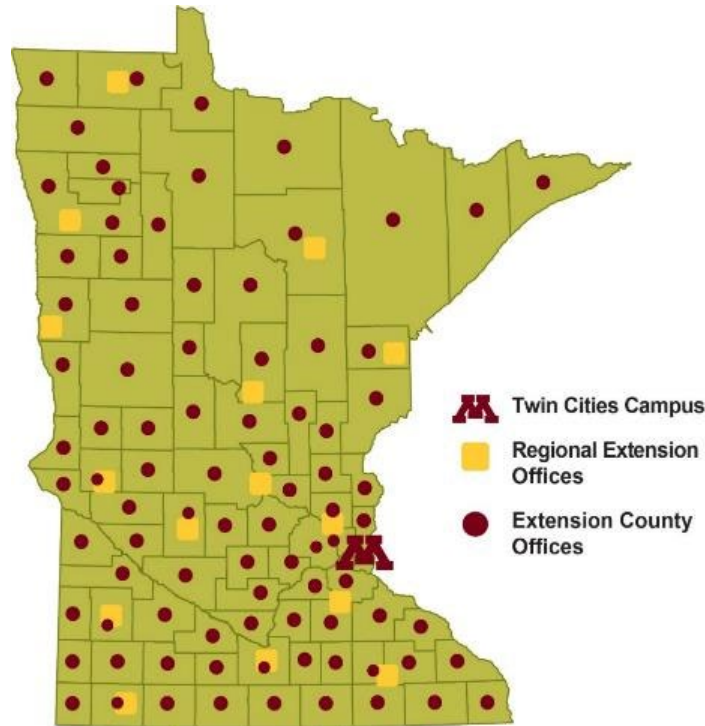
**Dr. Carolyn Lawrence-Dill – Iowa State University**

**Dr. Shibu Jose – University of Missouri**

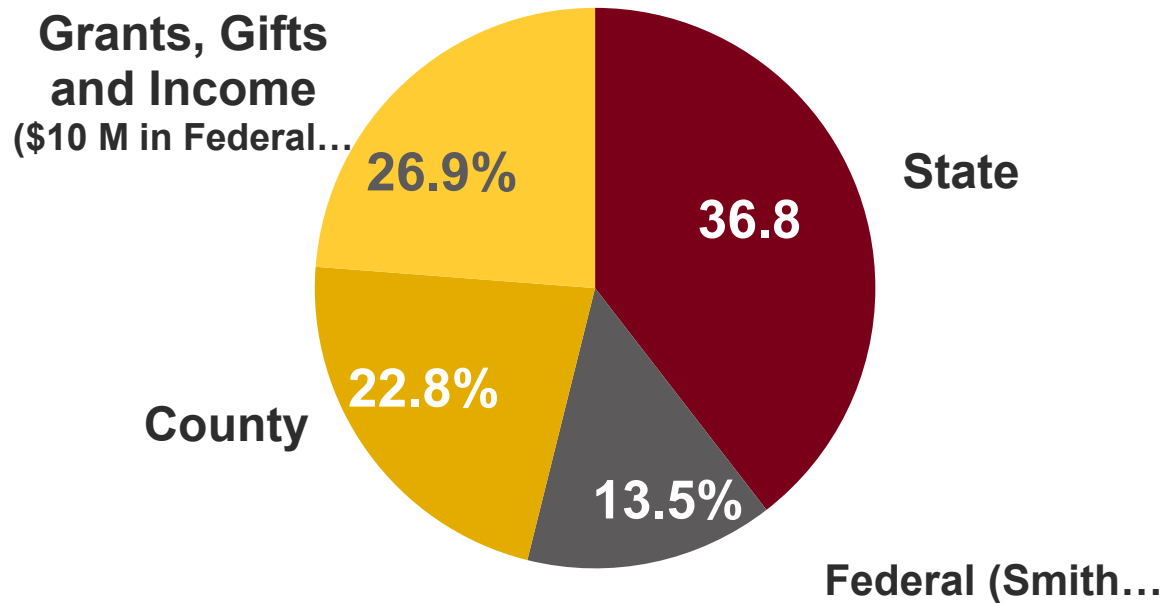
**Dr. Orlando McMeans – Southern University Ag Center**

# University of Minnesota Extension

---



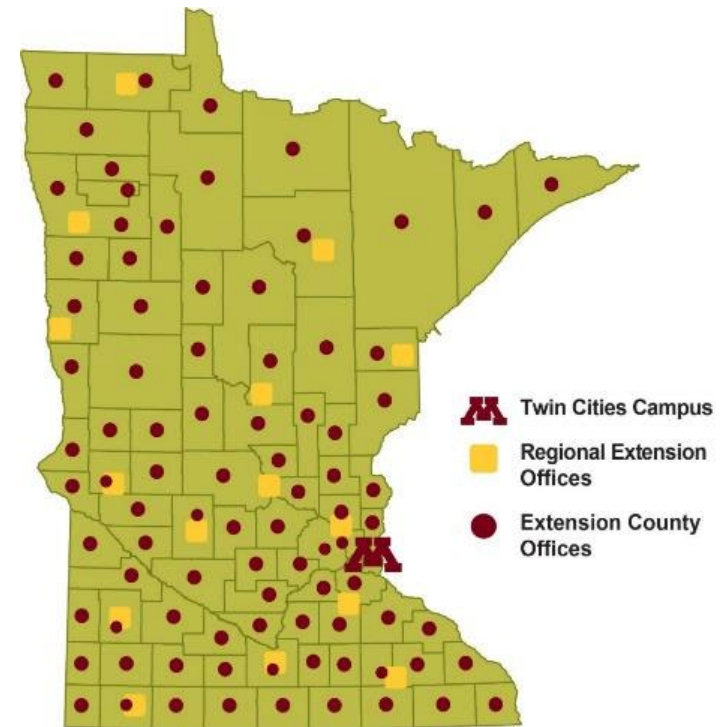
# Extension 2022-23 Budget: \$79 M



# Federal Capacity Funds

## Smith Lever (EFNEP and RREA):

- **Flexibility**
  - To respond
  - To partner
  - Leverage other funding



# Federal Capacity Funding allows flexibility to Respond to Disasters

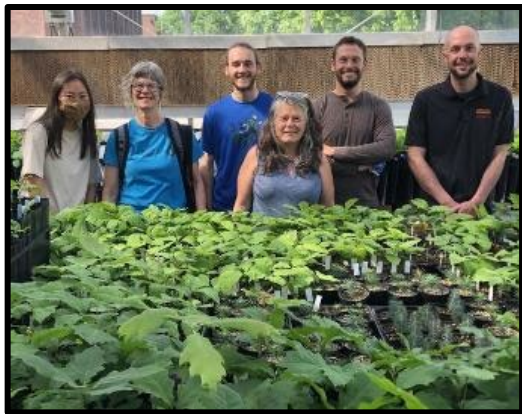




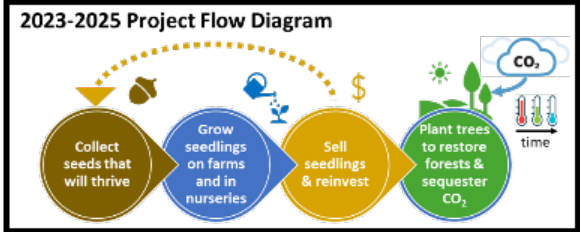
# Forest Assisted Migration Project Climate Smart Forestry

## Extension, University & Community Partnerships

- Master Gardeners and Master Naturalists collect seeds
- Tree Seed drop off locations at 11 Regional Offices
- UMD Forest Research supports project
- RSDP providing facilitation and leadership
- The Nature Conservancy, MN Power, farmers...



MN Million – forest restoration for carbon sequestration



**2021-2022 Pilot Project Accomplishments**

Opportunities for forest restoration

# Partnerships

---



## Extension faculty positions with NDSU

- Potatoes production
- Sugarbeet production
- Sugarbeet weed management
- Sheep Production
- Nutrition



UNIVERSITY OF MINNESOTA

Driven to Discover<sup>SM</sup>

# Across Minnesota's 87 counties and First Nations

- 4-H is Minnesota's largest youth development organization, growing leaders in every part of the state
- 125,000 youth
- 15,000 volunteers



# Learning and Leadership



**Grace Lavan wins  
MN State Conservation Award  
from  
the MN DNR by studying  
pipeline impacts on wolves**



**Teen teachers share  
about how they are  
teaching children to  
reduce and repurpose  
plastic on the news**



**Nicole Cash wins  
the National Youth  
in Action Award in  
STEM for robotics  
design for toddlers  
with disabilities**



# Key Partner--Volunteers



**233,194**  
hours given



## Programs

- Master Gardeners
- Master Naturalists
- Aquatic Invasive Species Detectors

**3,690**  
volunteers



**63**  
average  
hours per  
volunteer

**\$7.5**  
million  
value to  
Extension



**131**  
partnering  
organizations

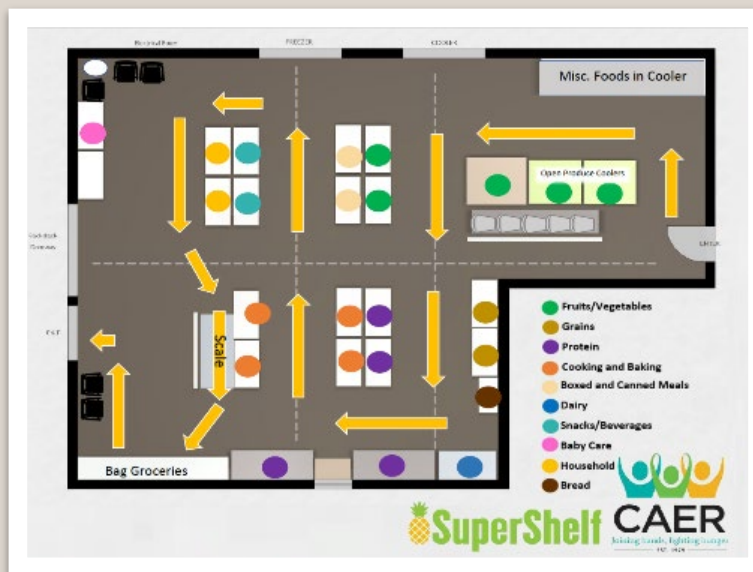


# Supershelf makes the healthy choice the easy choice



Shoppers take the most of what they encounter first

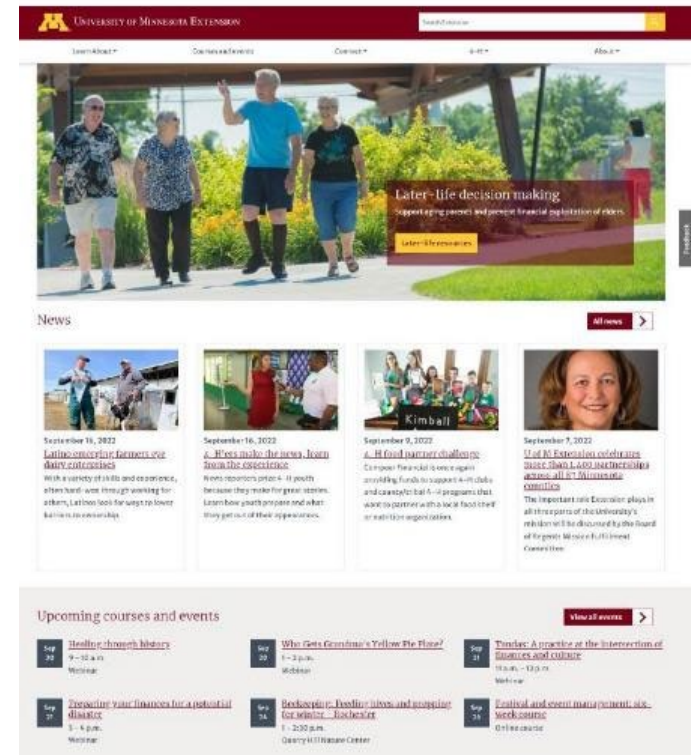
Behavioral economic principles are used when developing SuperShelf layouts



Signage is available in several different languages

# Extension's website – Connecting with MN

- 13M pageviews (up 11%)
- 8M users (up 18%)
- 63% access via mobile
- 83% come from searches
- Users rate pages on average 4.54 out of 5 stars (n=5,865)
- Most popular content:
  - dairy nutrition, houseplants, growing fruit, garden insects, horse health, soil management and nutrients, Extension courses and events



# Federal Competitive Funds

---

## AFRI (NIH, DOD, CDC):

- **Partnership with other Colleges**
  - **Many non-extension college programs are funded by grants**
    - **School of Public Health**
    - **Medical School**
  - **Leverage other funding**
  - **Build our capacity in non-traditional extension program areas**



# “Climate-smart” decision-making

## Minnesota Climate Adaptation Partnership (MCAP):

- **Climate resilience = Mitigation + Adaptation**
- **Multi-agency partnership, collaborations across sectors and levels of government**
- **Opening the window of opportunity for liquid manure application in northern, increasingly unpredictable climates (AFRI)**



# CYFAR (Workforce)

- Partnership between Youth Development and Family Development
- 5-year federal funding
- Minneapolis and Moorhead
- STEAM clubs, campus immersions & parent ed
- Educational pathways



# Agriculture & Animal Science - Workforce

- Partnership between Youth Development and Agriculture, Food and Natural Resources
- Global Agricultural Learners - **AFRI grant**
- Animal science education, showcase events, animal disease outbreaks and biosecurity education efforts



## Rural Stress: Mental Wellbeing of Youth & Farm Families



## USDA Partnership with 16 Midwest states

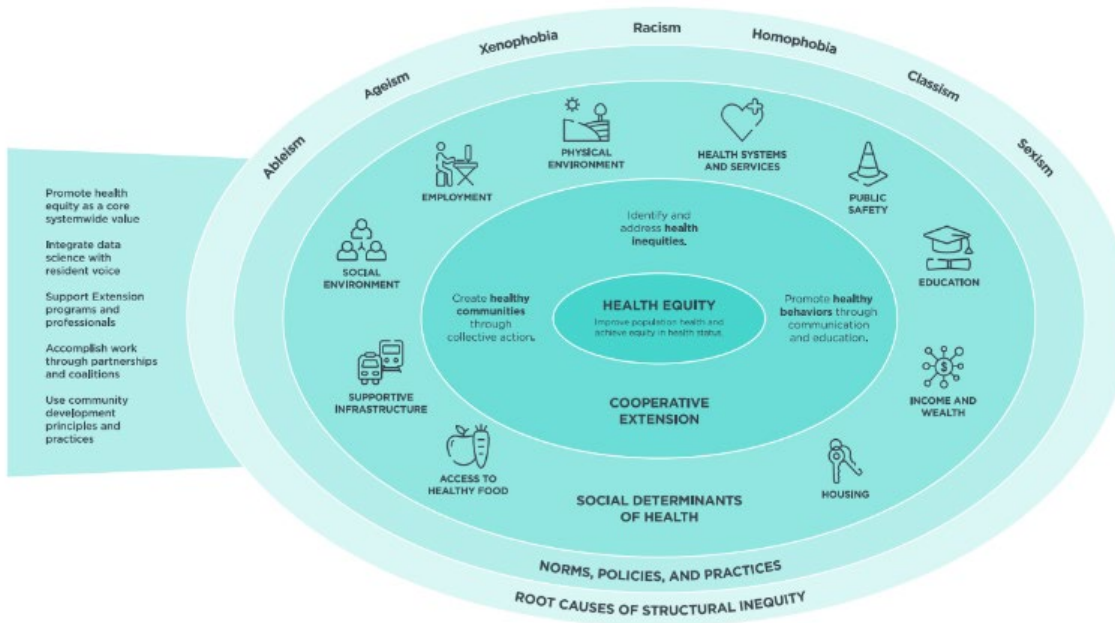
- **Community meeting** with key stakeholders in Todd, Polk and Norman counties
- **Multidisciplinary Extension team** Family Resiliency, 4-H, and Agriculture, Food and Natural Resources
- **Mental wellbeing resources** for county fairs and community events
- **Provided suicide education** to over 150 professionals & community members





# We are NOW implementing goals proposed by Federal Partners

## NIFA - National Framework for Health and Wellness



### USDA ACTIONS ON NUTRITION SECURITY

#### WHAT IS NUTRITION SECURITY?

Consistent and equitable access to healthy, safe, and affordable foods that promote optimal health and well-being.

#### HOW DOES NUTRITION SECURITY INTERSECT WITH HEALTH EQUITY?

Structural racism increases food insecurity and the risk of diet-related chronic diseases for historically underserved populations. Efforts to improve nutrition security also promote health equity.

#### WHY DOES NUTRITION SECURITY MATTER?



Poor nutrition is a leading cause of illness in the United States.

**600,000**  
Americans die each year due to diet-related diseases



Diet-related chronic diseases disproportionately impact historically underserved populations and hit hardest in communities with high food insecurity.

**3x**  
Black households experience food insecurity at more than triple the rate of white households.



Beyond health, this has negative impacts on other things.

**85%**  
of health care spending is related to diet-related chronic disease



#### HOW WILL WE ACHIEVE NUTRITION SECURITY?



Provide nutrition support throughout all stages of life.



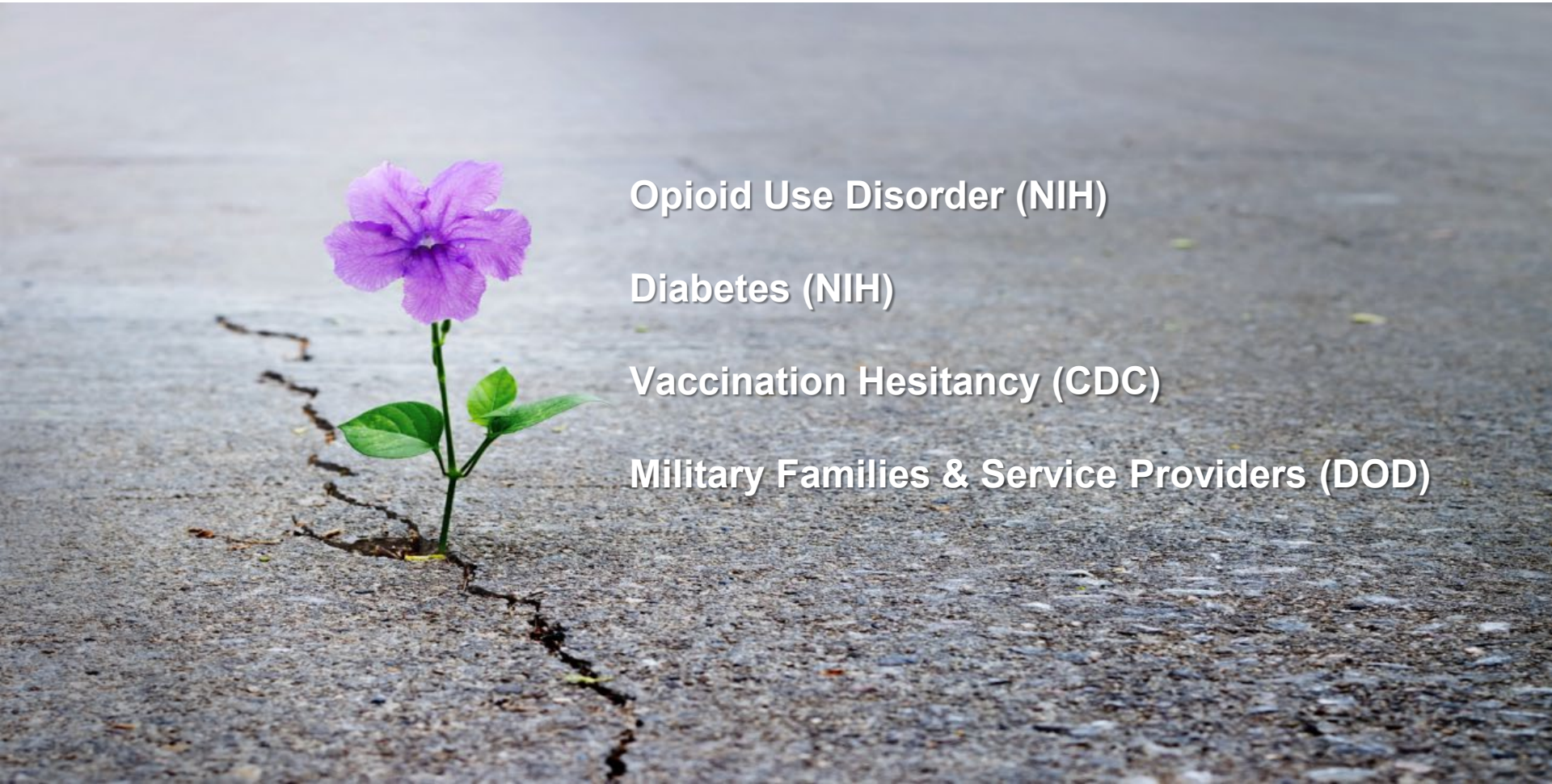
Connect all Americans to healthy, safe, affordable food sources.



Develop, translate, and enact nutrition science through partnership.



Prioritize equity every step of the way.



**Opioid Use Disorder (NIH)**

**Diabetes (NIH)**

**Vaccination Hesitancy (CDC)**

**Military Families & Service Providers (DOD)**





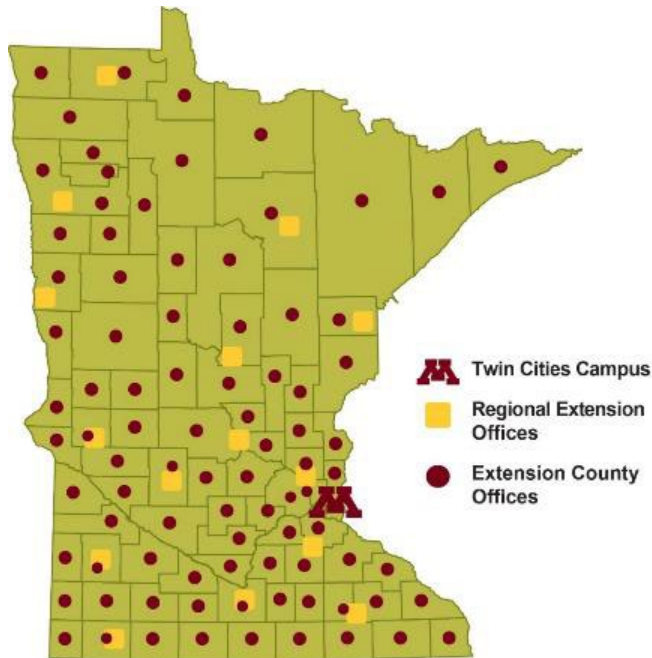
## University Partnerships with a Purpose

- Medical School
- Public Health
- College of Pharmacy
- College of Education  
& Human Development
- Institute on  
Community Integration
- Tribal Partners



# University of Minnesota Extension

---



*Thank  
You!*



# **LGU2U - Session 2**



# CALS/AES @ Iowa State University

---

How Capacity and Competitive  
Processes can Overlap and be Mutually  
Beneficial

Unique Partnerships across LGUs

# IOWA STATE UNIVERSITY

OF SCIENCE AND TECHNOLOGY

IOWA STATE UNIVERSITY

## This is Your Future in the Making

[See the Iowa State Experience >](#)

*OUR*  
**statements of aspiration**

*to be*

the most student-centric leading research university

SUCCESS FACTORS

*to be*

the university that cultivates a diverse, equitable, and inclusive environment where students, faculty, and staff flourish

SUCCESS FACTORS

*to be*

the university that fosters lifelong learning

SUCCESS FACTORS

*to be*

the university that creates opportunities and forges new frontiers

SUCCESS FACTORS

*to be*

the trusted partner for proactive and innovative solutions

SUCCESS FACTORS

**start something**  
College of Agriculture and Life Sciences

IOWA STATE UNIVERSITY

**\$4 mil.**

In scholarships are offered to students annually through CALS and its departments.

**98%**

of College of Agriculture and Life Sciences graduates reported they were working, continuing their education or serving in the military within six months of receiving their diplomas.

**4%**

Iowa State University's agricultural programs rank in the top 4% worldwide among other agriculture and forestry institutions, according to the 2022 QS World University Rankings.

## Fourteen Departments:

Agricultural & Biosystems Engineering

Agricultural Education & Studies

Agronomy

Animal Science

Biochemistry, Biophysics, and Molecular Biology

Ecology, Evolution & Organismal Biology

Economics

Flood Science & Human Nutrition

Genetics, Development & Cell Biology

Horticulture

Natural Resource Ecology & Management

Plant Pathology, Entomology and Microbiology

Sociology and Criminal Justice

Statistics

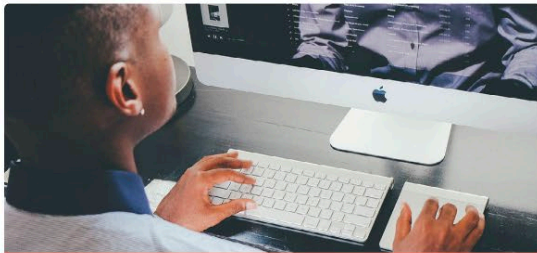
# Ag Experiment Station Funds

FY22 Experiment Station Budget was \$35,134,245

State Appropriations \$29,462,535 ~ 84%

Federal Appropriations \$5,671,710 ~ 16%

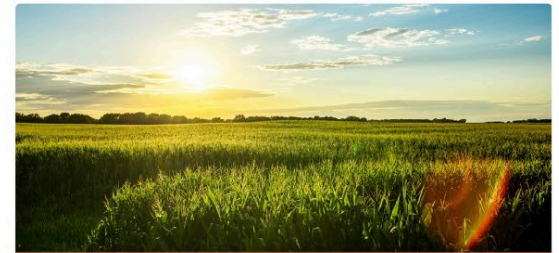
Spending federal funds & match requires an approved capacity project.



Areas of Research



Public Reports



Resources for Faculty



A photograph of an office interior. On the left, a desk holds a stack of books, a black folder, and a red sign that reads "READ THE FULL STRATEGIC PLAN BY [unreadable]". A window with light blue blinds is in the background. The text "Office of Research & Discovery" is overlaid in a large, black, serif font.

# Office of Research & *Discovery*

Ásrún Kristmundsdóttir

- New AES coordinator?
- Competitive Pre-Award  
CARES Team



+ Darwin Campbell  
Data Analyst



## INFORMATION AND SUPPORT FOR RESEARCHERS

Prepare the ground for your research to take root and flourish. Check this page for opportunities to support publication costs, improve your grantsmanship, and support new ideas.



Join the Funding Opps Listserv

### CALS Internal Funding Opps

[Gather a team](#)

[Grant writing / consulting](#)

[Travel support](#)

[Conference hosting support](#)

[Research seminar coaching](#)

[Request something else](#)

### More Funding Opportunities

[Research funding opps from the VPR](#)

[Limited submission opportunities](#)

[Grantsmanship training](#)

[Open access fee support](#)

[Cost-sharing program for research tools](#)



 [CARES Pre-Award Support](#)



Post-Award: Who Does What



 [AES: Ag Experiment Station](#)

[CAPER: CALS Advisory](#)



Research and Discovery Newsletter

### News for Researchers

[Strategic Seed Grants for Facilities & Equipment](#)

YEAR TWO! The AES [invites proposals](#) to advance research and research capacity through investing in equipment and/or supporting infrastructures for existing Hatch/Multistate Projects.

[NIFA Webinars](#)

**Sept 1:** Regional Innovation and Demonstration of Climate-smart Agriculture for Future Farms (CAFF) and **Sept 7:** NIFA Climate Adaptation and Resilience Plan

[Call for Proposals: NSF Regional Innovation Engines Teambuilding Support](#)

**Apply now!** Funding opportunity to support teambuilding - proposals reviewed on a rolling basis.



## Capacity Funds, esp. Hatch & Hatch Multistate

### Hatch

- Primarily salary support
- Equipment and Infrastructure Competition

*Benefits to the competition!*

*CoSPRT*

*Coordination*

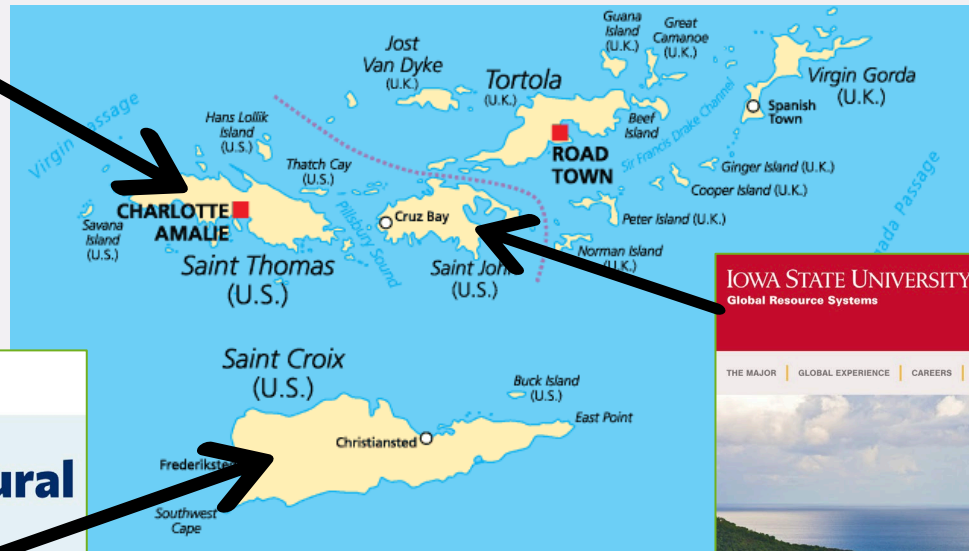
### Hatch Multistate

- \$ to travel to official meetings
- \$ to hold a meeting
- PD gets these benefits, can designate another





## An unlikely connection? University of Virgin Islands



University of the Virgin Islands

### Agriculture & Natural Resources

IOWA STATE UNIVERSITY  
Global Resource Systems

CALENDAR NEWS PEACE CORPS PREP f

THE MAJOR | GLOBAL EXPERIENCE | CAREERS | GLOBE COMMUNITY | ABOUT US



ABOUT THE EARTH PROGRAM

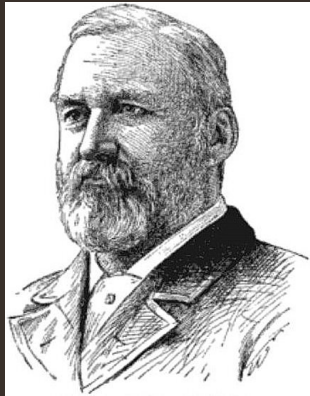
# **LGU2U - Session 2**

# Capacity and Competitive Funding: The University of Missouri

**Shibu Jose**

Associate Dean for Research & Director, MO Experiment Station

# Capacity Funds: Driving Our Research Mission



## ► Capacity Funds

- Over 90% in faculty salary
- Capacity Funds + State match is the lifeline of our College, CAFNR
- It drives our research mission in CAFNR
- Enable our faculty to bring in additional extramural competitive funding

Congressman William H. Hatch of Missouri

The Hatch Act of 1887

Laid the foundation for Agriculture research in the US

Capacity Funds	2016	2017	2018	2019	2020	2021	2022
Hatch	5,085,221	5,050,095	5,054,180	5,394,173	5,373,901	5,353,629	5,356,905
Hatch Multi-State	1,084,126	1,087,692	1,090,593	1,168,379	1,166,861	1,170,661	1,175,484
McIntire Stennis	631,995	629,776	631,352	673,887	671,695	653,703	655,844
Animal Health	38,828	54,002	54,666	61,095	57,469	59,150	55,389
	6,840,170	6,821,565	6,830,791	7,297,534	7,269,926	7,237,143	7,243,622

	Projects	People
Hatch	41	96
McIntire-Stennis	8	13
Multi-State	30	36

# MU CAFNR Research Enterprise



6

Divisions



188↑

Ranked Faculty

101.5 (11%)  
Research FTE



105

Postdocs



4

Research Extension and  
Education Centers  
(REECs)



325

Staff



430

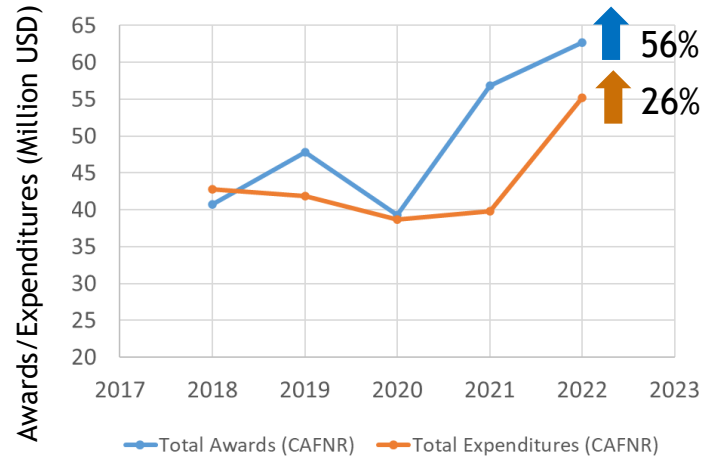
Graduate Students



2600

UG Students

# Competitive Funds: Leveraging Capacity Funds



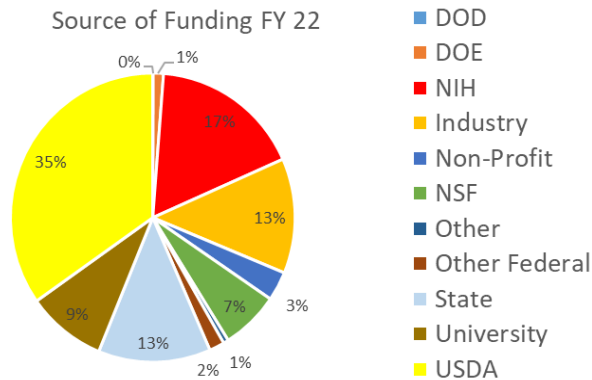
## Double Awards and Expenditures

### FY 22

62.7M in Awards

55.2M in Expenditures

Leveraging capacity funds by 8X



# The Impact: Advancing Agriculture

## Why is Ag Research Relevant?

We contribute to the R&D to support Ag, Food and Natural Resources in MO and beyond

**Together,  
Agriculture  
(\$93.7B) &  
Tourism (\$17B)  
contribute 33%  
to MO GDP**

- Correlating **Soil Health** Parameters, Agriculture Production and Environmental Services Across A Diversity of Landscapes and Production Practices
- Discovery of genetic resources and improvement of **drought tolerance in soybean**
- Improving Production Efficiency and Reliability of Cropping **Horticultural** Crops
- Advancing the Genotype to Phenotype Relationship Through **Genomics in Livestock**
- Understanding habitat use and spatial ecology of **fish and wildlife** populations in forested landscapes
- Developing Management Strategies for **Healthy Forests**
- **Economic analysis** of contemporary agricultural and environmental policy issues to inform **public policy**





## The Impact: Economic Growth



  
SOYLEIC<sup>®</sup>

# Partner or Perish

- Patterning with Lincoln University (1890)
- Other 1890s, 1862s, Federal and State agencies, Private Sector
- A new opportunity to partner with the Osage Nation
  - Thanks to the vision of a donor, late Mr. Doug Allen, an endowment was established (another way to leverage federal funds!)
  - A professorship in agroforestry created in 2009 (\$3M)
  - A new research farm (valued at \$1M; donated by Mr. Allen), Land of the Osages, established in 2019 (\$6M)



Osage Chief Geoffrey Standing Bear delivers a speech at the LORC Grand Opening ceremony in 2019.

## MU Partnership with the Osage Nation

- MU is a Land Grant University founded on Osage lands via the 1862 Morrill Act
- Agroforestry is rooted in Indigenous knowledge, science, and practices
- MU Land of the Osages Research Farm
  - Potential for collaborative food, agriculture, and natural resources research with Osage Nation
- Transforming challenges into opportunities
  - Increasing Native presence & visibility at MU
  - Seeking meaningful collaborative research
  - Training for intercultural competence

## Some of the Initial Successes

- ▶ Osage Nation Harvest Land Farm orchard design (2019-2020)
- ▶ Agroforestry Training Academy scholarships for Osage participants (2 participants fully funded by MU)
- ▶ Archaeological survey at Land of the Osages Research Center led by Osage staff
- ▶ Peer reviewed publications in co-authorship with Osage Nation experts

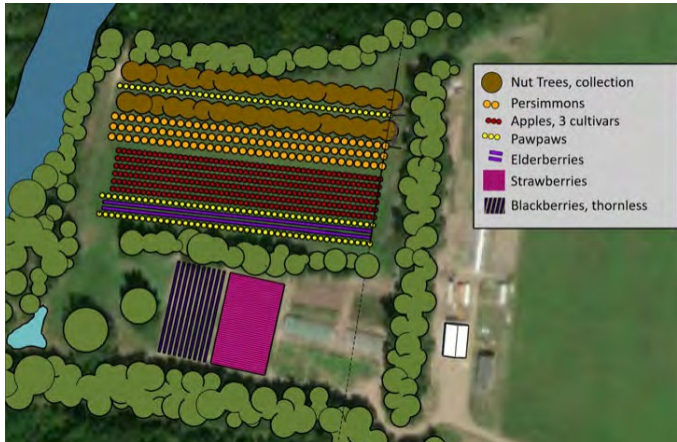
Lovell, S.T.; Hayman, J.; Hemmelgarn, H.; Hunter, A.A.; Taylor, J.R. 2021. Community Orchards for Food Sovereignty, Human Health, and Climate Resilience: Indigenous Roots and Contemporary Applications. *Forests* 12, 1533. <https://doi.org/10.3390/f12111533>

### ▶ **USDA NIFA New Beginning for Tribal Students grant program**

*MU-Osage Food & Ag Program for Tribal Student Recruitment, Engagement, and Success* | \$497,378 | 2021-2025

- ▶ Summer experiential learning program for Osage HS students (five students in summer 2022 along with a mentor)
- ▶ Scholarships for Osage students in CAFNR (four set up; one current student)
- ▶ Learning exchange & training for project staff





# **LGU2U - Session 2**





# LGU2U – 1890 PERSPECTIVE ON USDA-NIFA FUNDING



Presented by:

**Orlando F. McMeans, Ph.D.**  
**Chancellor-Dean**

*Southern University Agricultural Research  
and Extension Center*





# LGU2U – 1890 PERSPECTIVE ON USDA-NIFA FUNDING

The 1890 land-grant institutions are historically black universities that were established under the Second Morrill Act of 1890. NIFA's 1890 land-grant institutions programs are intended to strengthen research, extension, and teaching in the food and agricultural (and forestry) sciences by building the institutional capacities of the 1890 Institutions.







# LGU2U – 1890 PERSPECTIVE ON USDA-NIFA FUNDING

## 1890 INSTITUTIONS MAP



@suagcenter



www.suagcenter.com



# LGU2U – 1890 PERSPECTIVE ON USDA-NIFA FUNDING

## THERE ARE NINETEEN 1890 INSTITUTIONS

- Alabama A&M
- Alcorn State University
- Central State University
- Delaware State University
- Florida A&M University
- Fort Valley State University
- Kentucky State University
- Langston University
- Lincoln University
- North Carolina A&T State University
- Prairie View A&M University
- South Carolina State University
- Southern University and A&M College
- Tennessee State University
- Tuskegee University
- University of Arkansas Pine Bluff
- University of Maryland Eastern Shore
- Virginia State University
- West Virginia State University







# LGU2U – 1890 PERSPECTIVE ON USDA-NIFA FUNDING

## HOW CAPACITY AND COMPETITIVE FUNDS ARE USED

Let's discuss...

- Capacity funds are foundational for 1890s
- Funding to support research and extension faculty/staff and programming
- Leveraging and matching



@suagcenter



www.suagcenter.com



# LGU2U – 1890 PERSPECTIVE ON USDA-NIFA FUNDING

## CAPACITY BUILDING FUNDS

- **Evans Allen**
  - Research staple funding for 1890s
  - The ceiling is 30% of Hatch
- **1890 Extension**
  - Extension/Outreach staple funding for 1890s
  - The ceiling is 20% of Smith Lever
- **1890 Facilities Funding**
  - Annual allocation of funding to support building and renovations of Agricultural facilities and related infrastructure in connection with R/E/T
    - Due to limited amount of annual allocation: Often must accrue funding over years for larger construction and renovation projects.
    - Cost of construction over 20% greater after pandemic.
    - 1890s have received some criticism for having a significant amount of funding carried over







# LGU2U – 1890 PERSPECTIVE ON USDA-NIFA FUNDING

## COMPETITIVE 1890 FUNDING

- **1890 Capacity Building Grants (CBG) Program**
  - Funding to build and strengthen capacity for 1890s in research, extension, and teaching





# LGU2U – 1890 PERSPECTIVE ON USDA-NIFA FUNDING

## MCINTIRE STENNIS CAPACITY GRANT

- To increase forestry research in the production, utilization, and protection of forestland
- To train future forestry scientists; and to involve other disciplines in forestry research
- State Government to certify eligible institutions and coordinate state programming
- M-S Capacity grant recipients are to provide matching, either cash or in-kind, on a dollar-for-dollar basis on all federal funds allotted







# LGU2U – 1890 PERSPECTIVE ON USDA-NIFA FUNDING

## OTHER KEY PROGRAMS & FUNDING

- **1890 Scholarship Program**
  - Newest 1890 program
  - The purpose is to increase the number (*and quality*) of students studying agriculture, food, natural resource sciences, and other agriculture-related disciplines
  - Legislation allocates \$500,000 in mandatory funding per 1890 Institution
  - Up to an additional \$500,000 in discretionary funding per 1890 Institution
  - Each 1890 has received \$1,000,000 in scholarship funding annually
  - Southern University's 1890 Scholarship program is called Jag S.T.A.R.S. (*Student Training in Academics, Research and Service*)





# LGU2U – 1890 PERSPECTIVE ON USDA-NIFA FUNDING

## CHALLENGES

- **1890s Low Submission of AFRI Grants**
  - USDA-NIFA encourages 1890s to apply
  - 1890s are discouraged based on early low success rates
  - AFRI requires a matching component on a dollar-for-dollar basis of the federal allocation.
  - Still encourage 1890s to apply for AFRI
- **State Match**
  - 1890s are federally mandated to match its research and extension formula funding 1 to 1 with a non-federal match
  - Commonly referred to as a “State Match”
  - Currently, a number of 1890s do not meet the match and are forced to request a waiver
  - A minimum of 50% match is required (*and the other 50% can be waived at the discretion of the Secy. of Ag*) or else lose federal funding
  - While 1890s continue to advocate for increases in USDA federal research and extension formula funds, it also exacerbates the issue around meeting the state match requirement







# LGU2U – 1890 PERSPECTIVE ON USDA-NIFA FUNDING



## QUESTIONS?



@suagcenter



[www.suagcenter.com](http://www.suagcenter.com)



# LGU2U – 1890 PERSPECTIVE ON USDA-NIFA FUNDING

*Thank You!*



# **LGU2U - Session 2**





# Accountability for Competitive and Capacity Funding

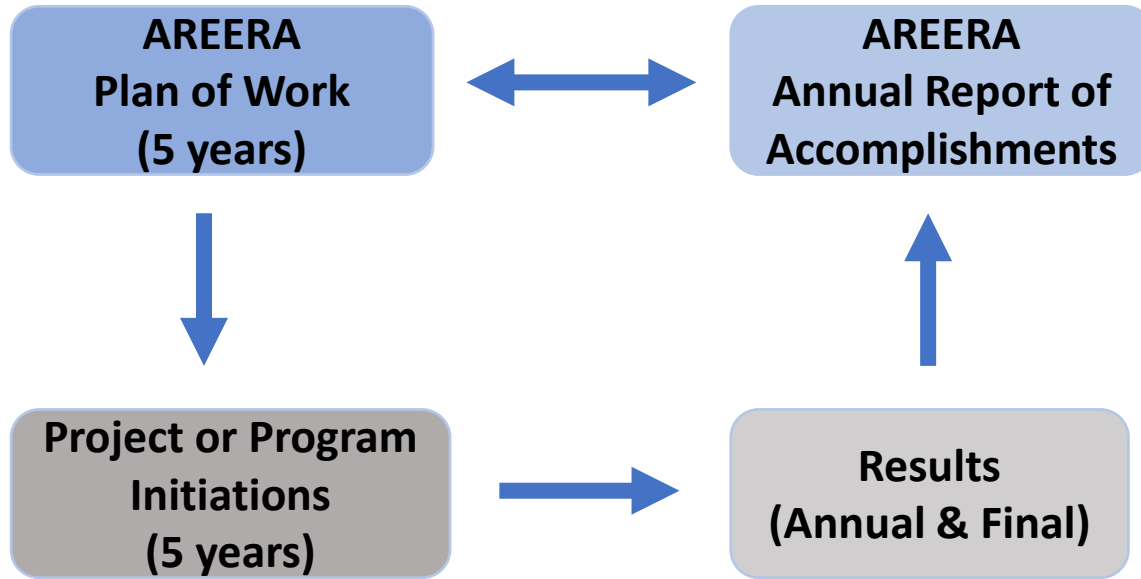
**Deb Hamernik**  
Deputy Director  
Institute of Food Production & Sustainability

LGU2U Phase II Program  
November 17, 2022

## Accountability:

- **Competitive** programs:
  - NIFA relies on the peer-review process to recommend projects for funding
  - NPL (as the program contact) oversees peer-review process and follows recommendations from peer-review panel to make funding decisions
- Renewal applications:
  - Peer reviewers evaluate progress as described in renewal application
  - Also review final progress report in NIFA Data Gateway

## AREERA Capacity Funding



LGU: Merit or Scientific Peer Review

NIFA: Administrative Review

## Accountability (continued):

- **Capacity** programs:

- Funding allocated directly to LGU
- Directors decide how to spend capacity funds
  - Salaries
  - Seed grants to enhance competitiveness
  - Start-up or retention packages
  - Long-term or high risk/high reward projects (breeding, germplasm preservation, ecological studies, etc.)
  - Items hard to fund through competitive programs (databases, monitoring, etc.)
- LGU conducts merit or scientific peer review of projects and programs
- NIFA conduct administrative review

## NIFA Administrative Review Capacity Initiations:

- Usually NPL (sometimes Division Director)
- Align NIFA subject matter expertise with scope of project/program
- Administrative review focuses on ensuring:
  - Compliance with **legislative purpose of the funding/federal laws** and **NIFA guidelines**.
  - Alignment with the mission of the **USDA-NIFA** and is relevant to **food and agricultural sciences** (as defined in AREERA).
  - Planned activities are consistent with the approved **5-year Plan of Work**.
  - Compliance approvals for research with human subjects (IRB) or vertebrate animals (IACUC)



## **Review Annual Reports (competitive)/Results (capacity):**

- NIFA reviews:
  - Progress toward completion of objectives
  - Potential for outputs, outcomes, and impacts after completion
  - Changes in project or program direction due to unforeseen circumstances

## NIFA Expectations (Capacity and Competitive):

- **Outputs:** Abstracts, publications, # trainees, patents, inventions, new germplasm, etc.
- **Outcomes:** New knowledge; Changes in management practices or behavior (adoption of new farming practices, change in diet)
- **Impacts:** Long-term changes in conditions (profitability, environment, health and well-being, etc.)

## Review **Final Reports (competitive)/Results (capacity):**

- Covers entire duration of project or program (not just last year)
- NIFA looks for outcomes and impacts to communicate **success stories:**
  - Addressed important or timely problem/challenge/critical issue. Who cares and why?
  - What was done to address the problem?
  - Describe change in knowledge, actions, or conditions as a result of this project or program to address the problem/challenge/critical issue. So what? Provide quantitative data, if possible.
    - Economic (profitability)
    - Environment (land use, water quality, soil health, etc.)
    - Health and well-being (improved health, quality of life, etc.)

## How Impacts (Success Stories) are Used:

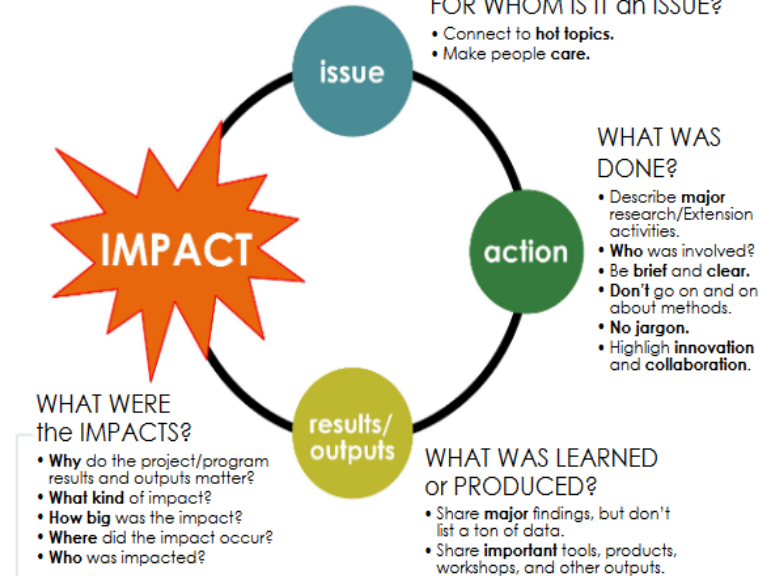
- Planning and defending the NIFA budget
- Evaluating NIFA programs
- Communicating accomplishments and impacts:
  - Congress
  - USDA Administration (REE and Secretary of Agriculture)
  - Stakeholders
    - Advocates for NIFA
    - Reporters/News Media
    - Public



# Multistate Research Fund Impacts

<https://www.mrfimpacts.org/impact-writing-workshops>

## THE PARTS OF AN IMPACT STORY:







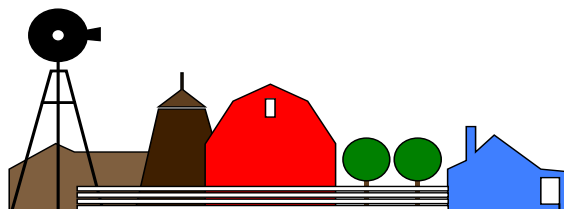
# Non-Discrimination Statement

<https://www.usda.gov/non-discrimination-statement>

- In accordance with federal civil rights law and U.S. Department of Agriculture (USDA) civil rights regulations and policies, the USDA, its Agencies, offices, and employees, and institutions participating in or administering USDA programs, are prohibited from discriminating based on race, color, national origin, religion, sex, gender identity (including gender expression), sexual orientation, disability, age, marital status, family/parental status, income derived from a public assistance program, political beliefs, or reprisal or retaliation for prior civil rights activity, in any program or activity conducted or funded by USDA (not all bases apply to all programs). Remedies and complaint filing deadlines vary by program or incident.
- Persons with disabilities who require alternative means of communication for program information (e.g., Braille, large print, audiotape, American Sign Language, etc.) should contact the responsible agency or USDA's TARGET Center at (202) 720-2600 (voice and TTY) or contact USDA through the Federal Relay Service at (800) 877-8339. Additionally, program information may be made available in languages other than English.
- To file a program discrimination complaint, complete the USDA Program Discrimination Complaint Form, AD-3027, found online at [How to File a Program Discrimination Complaint](#) and at any USDA office or write a letter addressed to USDA and provide in the letter all of the information requested in the form. To request a copy of the complaint form, call (866) 632-9992. Submit your completed form or letter to USDA by: (1) mail: U.S. Department of Agriculture, Office of the Assistant Secretary for Civil Rights, 1400 Independence Avenue, SW, Washington, D.C. 20250-9410; (2) fax (202) 690-7442; or (3) email: [program.intake@usda.gov](mailto:program.intake@usda.gov).
- USDA is an equal opportunity provider, employer and lender.

# Questions?

Deb Hamernik  
Debora.Hamernik@USDA.gov



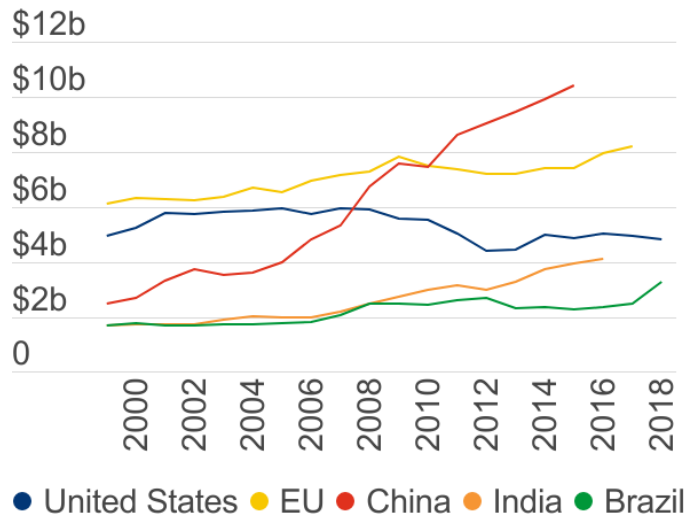
# Research Capacity Funds

---

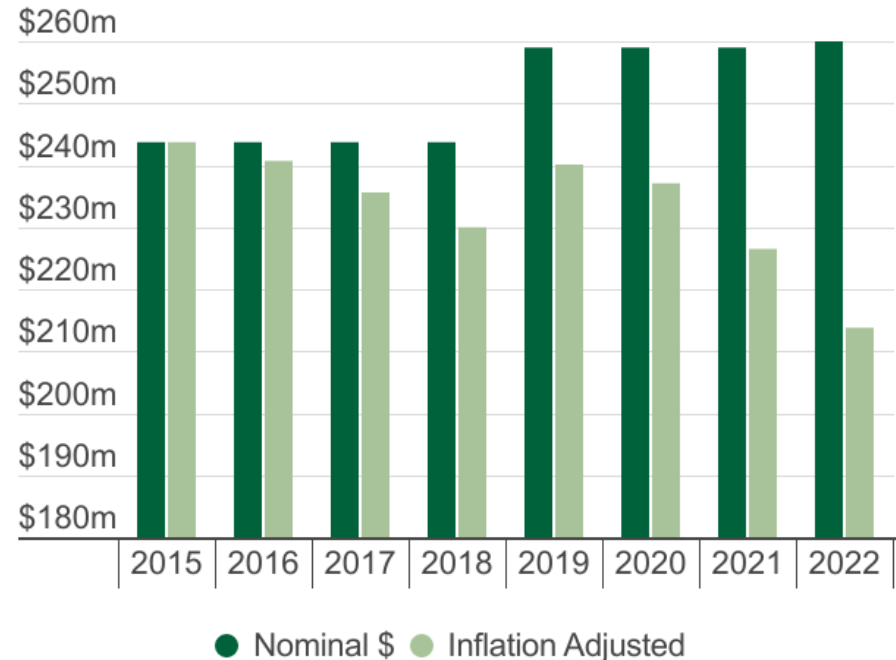
- Hatch Regular**
- Hatch Multistate**
- Evans-Allen**
- Animal Health and Disease**
- McIntire-Stennis**

# Program Description and History

## Public Investment in Ag R&D



## Hatch Funding History



Since 2004, funding declines led to:

Scientist FTEs



-21%

Research projects



-20%

Annual hours of ag research

12.37 million

-32%

## **LGU2U - Session 2**

# **Funding Connections and Programming**

**Thank You For Your Time!**

**Please watch for follow up messages with “LGU2U” in the subject line.**

**For updates:**

**<https://www.ncra-saes.org/nc-lgu2u-initiative>**